



Rio 2016 Paralympic Sailing Competition

SUPPORT TEAM REGULATIONS

1. GENERAL

- 1.1 The Support Team Regulations (STR) shall apply from 1200 on 31 August to 2000 on 17 September.
- 1.2 The term 'support team' means coaches, team leaders and other support personnel who provide or may provide, physical or advisory support to an athlete, including the gathering of data that may be used at a later time.
- 1.3 By registering as a support team member and receiving accreditation, each such person agrees to be governed by the rules as defined in the Notice of Race.
- 1.4 An alleged breach of any of these STR or a rule by a member of a support team may be referred to the International Jury who may call a hearing. As a result of the hearing, the International Jury may instruct the Organizing Authority to withdraw accreditation and access rights from the offending party, with or without the option of substitution, either for a specified period or for the remainder of the competition. Note also, action may be taken under the World Sailing Disciplinary Code. The International Jury will take into consideration any requirement to provide assistance required by other rules governing the regatta.
- 1.5 Only accredited support team members shall have access to the venue.
- 1.6 Support team members shall complete a registration form at the Sport Information Desk between 31 August and 11 September inclusive.
- 1.7 Support team members shall register either
 - 1.7.1 before leaving the Venue in a support boat for the first time; or
 - 1.7.2 by 1000 on the day before the first race of each event that they are supporting, whichever is the earlier.
- 1.8 Support team members shall comply with any reasonable request from a regatta official.
- 1.9 Support team members shall not provide any outside help as per RRS 41.
- 1.10 In an emergency, these STR may be waived. However, support team members may be required to explain their actions to the international Jury, who may act under STR 1.4 if they are not satisfied that the actions were justified
- 1.11 Support team personnel shall handle any boats or equipment provided by the Organizing Authority with proper care and seamanship, and in compliance with any written instructions.
- 1.12 The Organizing Authority may change these regulations at any time. Any changes will be posted on the Official Noticeboard and circulated to team leaders.

2. SUPPORT BOATS – GENERAL

- 2.1 For the purpose of the rules governing this regatta, a support boat includes any boat that is under the control or direction of a support team member.
- 2.2 The Organizing Authority may inspect support boats at any time to ensure that they comply with these regulations, and the person responsible for the boat shall facilitate such inspection.



- 2.3 No more than one support boat per National Paralympic Committee (NPC) per Event entered shall be registered.
- 2.4 The Organizing Authority may, at its discretion, refuse to register support boats not deemed to be suitable. Generally, open boats more than 4.0m and less than 7.5m in length and having minimal or no superstructure (cabin, coach house, bridge, etc.) are considered suitable.
- 2.5 Support boats and their designated drivers shall be registered at the Sport Information Desk either before leaving the Venue by water for the first time or by 1800 on the day before the first race of the Event that it is supporting, whichever is earlier.
 - 2.5.1 Each support boat shall be insured with valid third-party liability insurance with a minimum coverage of at least US\$1,500,000 (or equivalent) per incident.
 - 2.5.2 Only an accredited support team member may be a designated driver.
 - 2.5.3 The person registering the support boat shall sign to confirm that:
 - he / she holds a valid insurance certificate showing proof of third party liability coverage as required by 2.3.1;
 - the designated driver has a motorboat driving licence recognized by a national authority appropriate to that boat; and
 - anyone who will be using a radio has an appropriate radio operation licence recognized by a national authority.
- 2.6 Any radio device including VHF marine transceivers and boat-mounted VHF transceivers and devices that use radio frequencies that may be carried or used in the support boat shall be declared in writing to the organizing authority at registration. All radios shall comply with Rio 2016 Radio Regulations (found at <http://www.rio2016.com/transparencia/en/documents>, Spectrum Documents) and a Radio Frequency Clearance shall be requested, and will be subject to checking by the Rio 2016 Technology Area.
- 2.7 Support boats shall carry only accredited personnel.
- 2.8 The registered, designated driver(s) of a support boat will be responsible for the control of the boat at all times and will be held responsible for any inappropriate behaviour, dangerous actions or improper practices, or actions affecting the fairness or safety of competition.
- 2.9 Support boats are permitted to carry one or more support team members from other competing NOCs that do not have a registered support boat for that Event.
- 2.10 Support team members who do not have a support boat but who will go afloat in another support team members support boat shall register at the Sport Information Desk either before
 - 2.10.1 leaving the Sailing Venue by water for the first time; or
 - 2.10.2 by 1800 on the day before the first race of the Event that they are supporting, whichever is the earlier.
- 2.11 Support boats shall meet the requirements of NoR 2 (Identification and Advertising) and shall be marked as follows:
 - 2.11.1 The three-letter NPC code shall be clearly displayed on both sides of the boat in strongly contrasting colours at all times while afloat. The minimum height for the letters shall be 200mm. The letters will not be provided by the Organizing Authority.
 - 2.11.2 Each support boat shall clearly display on both sides of the boat (tubes, hull or console) a three-digit number with Rio 2016 logo at all times when afloat. The numbers will be supplied by the Organizing Authority.



- 2.12 Support boats may fly the national flag and / or the national maritime flag. No flag should have a hoist longer than 75cm. No other flags or burgees may be flown.

3. SUPPORT BOATS - VENUE

- 3.1 Only support boats that will be registered will be allowed in the Venue.
- 3.2 Support boats shall use the designated slipway for launching. Once launched, trailers shall be moved immediately to the trailer park or as otherwise directed by the Organizing Authority. All trailers shall have the boat or owner's name and NPC marked on the trailer.
- 3.3 Support boats shall not use the crane launching facilities for any purpose whatsoever, including mooring, launching and retrieval, and loading and unloading of equipment unless approved by the Organizing Authority.
- 3.4 When not in use, support boats shall be appropriately berthed at the Venue in the allocated areas for support boats for the entire time that these STR apply.
- 3.5 An NPC is allowed one support boat in a particular Course Area for each Event where it has a competitor entered.
- 3.6 No item carried on board a support boat shall protrude over the stern, bow or sides of the boat, nor should any mast or equipment exceed a height of 4.0m from the waterline.
- 3.7 Support boats shall not leave any device, piece of equipment, buoy, marker or similar item permanently in the water. Temporary use of floating objects is allowed for current measurement. These objects shall be removed as soon as the measurement has been taken. In case this Regulation is broken, and in addition to any penalty, any item left in the water may be removed and destroyed for safety reasons.
- 3.8 Support boats shall take particular care to minimise their wash when transiting the Pão de Açúcar and Escola Naval Course Areas. When fleets are racing in these areas, support boats may have to stop and wait until an opportunity arises to pass the racing boats with the minimum of disturbance.

4. SUPPORT BOAT - SAFETY

- 4.1 Support boats shall carry on board:
- 4.1.1 Personal flotation devices for all passengers and the driver (it is recommended that they are worn at all times when afloat);
 - 4.1.2 first-aid kit;
 - 4.1.3 VHF radio capable of receiving instruction on VHF radio channel 77;
 - 4.1.4 device for making a sound signal;
 - 4.1.5 compass;
 - 4.1.6 adequate anchor and tackle for conditions and depth;
 - 4.1.7 tow rope (minimum 15m long and 10mm thick);
 - 4.1.8 operational engine kill cord (also known as a safety lanyard or automatic engine immobiliser);
 - 4.1.9 knife; and
 - 4.1.10 additional safety equipment as required by Brazilian maritime law for locally chartered boats.
- 4.2 It is strongly recommended that the kill cord is used at all times when the engine is running.



- 4.3 Support boats shall never exceed maximum plated / certified weight and passenger limits.
 - 4.4 Team leaders are responsible for overseeing the safety of their support boats on the water, including knowledge of who is afloat and ensuring their safe return to the Venue. They should notify Marina da Gloria Radio Station (ECO 37) on VHF radio channel 68 or 69 if they are concerned about the safety of any of their support boats.
 - 4.5 At all times, the registered, designated driver(s) of a support boat shall comply with directions given by a race official. In particular, this includes assisting in rescue operations when requested to do so.
 - 4.6 Support boats shall comply with local harbour and marina regulations. In particular:
 - 4.6.1 Speed limits shall be respected in the marina (Dead Slow - 3 knots) and stop only on the allocated berth places.
 - 4.6.2 Support boats shall obey instructions from any race marshal, security or government marine safety official.
 - 4.6.3 Support boats shall stay clear of all ferries.
- 5. SUPPORT BOAT ELECTRONICS**
- 5.1 Support Teams may carry and use only permitted electronic equipment on support boats.
 - 5.2 Unless specifically permitted by STR 5.3, prohibited equipment include:
 - 5.2.1 Equipment with functions capable of transmitting or receiving with a range greater than 100 metres using Wi-Fi, Bluetooth, Personal Area Networks, satellite based technology or any other system, that cannot be shown to be disabled.
 - 5.2.2 Equipment with functions capable of transmitting or receiving technical sailing, weather, tidal information or other information which may provide a competitive advantage to an NPC's competitors, that cannot be shown to be disabled.
 - 5.3 Permitted equipment is limited to:
 - 5.3.1 Equipment listed in STR 4.1.3 provided it is only used in accordance with STR 4.4, STR 5.5 and STR 7.4.
 - 5.3.2 Equipment consisting of devices that use Wi-Fi, Bluetooth or Personal Area Networks with a range of less than 100 metres to only communicate between these devices.
 - 5.3.3 Equipment with all prohibited functions disabled. This includes audio and video recording devices such as tablets and mobile phones. Upon request by an official, all prohibited functions must be demonstrated to be disabled. Otherwise, the equipment is prohibited. If a prohibited function may be disabled by the removal of parts, those parts shall not be taken afloat.
 - 5.3.4 GPS equipment.
 - 5.3.5 Any equipment that is only used in case of an emergency
 - 5.4 The Team Leader and designated support boat driver for each registered support boat shall sign a declaration as part of the registration process that the electronics carried on board the support boat and support team members that go afloat will comply with the STR. The Team Leader and designated support boat driver shall be jointly responsible, in addition to any individual support team member, for any breach of the STR by members of their support team unless they can demonstrate they took reasonable measures to ensure compliance.
 - 5.5 A support boat may use a VHF radio to receive only on the designated race committee channel for the course the support boat is on at that time.



6. SUPPORT BOAT ZONE

- 6.1 The Support Boat Zone is defined in Appendix 1.
- 6.2 The Race Committee will establish a Support Boat Zone on any course area. The Support Boat Zone will be marked with black buoys. The Support Boat Zone will be established before the orange starting line flag is displayed with one sound signal at least five minutes before a warning signal is made as per SI 12.6.
- 6.3 A Support Boat Zone may be positioned to one side to maximise the Course Area available for racing. Support boats shall always remain on the non-course side of the support boat marks, wherever they are set.
- 6.4 When a Support Boat Zone has been established after the first warning signal of the day, support boats shall retire to the Support Boat Zone until all racing has been completed, postponed or abandoned for that Course Area, unless instructed to do otherwise by the Race Committee.
- 6.5 Between sequences of racing, or when all racing for that Course Area has been postponed or abandoned, support boats may enter the Course Area to service their athletes, but shall restrict their speed to five knots. If further racing is to take place, support boats shall immediately retire to the Support Boat Zone at the warning signal for the first race of the next racing session
- 6.6 If the Race committee has not established a Support Boat Zone when the orange starting line flag is displayed with one sound signal at least five minutes before a warning signal is made STR 7 will apply.
- 6.7 If Flag V is displayed on the race committee boat, STR 7.4 applies.

7. SPECIAL SAFETY RULES

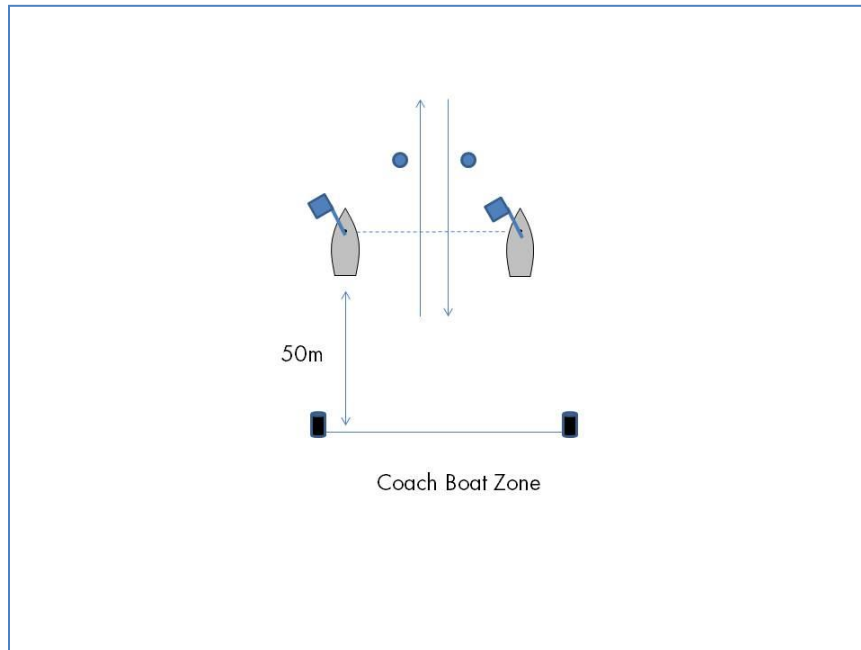
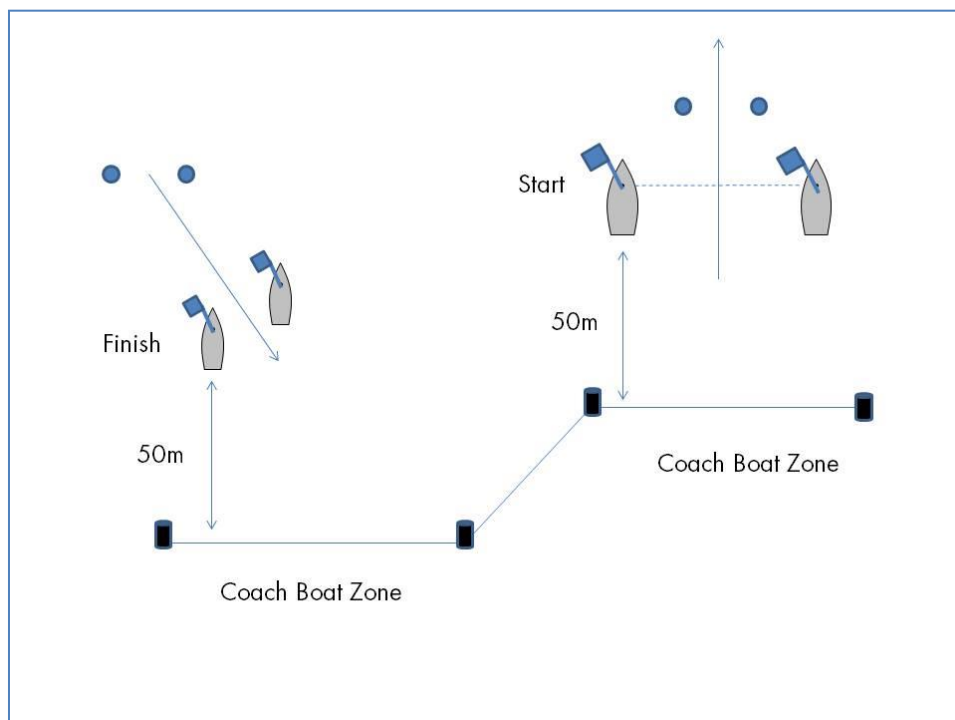
- 7.1.1 If no Support Boat Zone is established as in STR 6; from the time of the preparatory signal for the first fleet to start until all boats in all fleets are no longer racing, support boats shall stay outside areas where boats are racing as defined in Appendix 2 and shall not be:
 - 7.1.2 closer than 100m to any boat racing;
 - 7.1.3 within 100m to leeward of the starting line or within 100m of its marks from the time of the preparatory signal until all boats have left the starting area or the Race Committee signals a postponement, general recall or abandonment;
 - 7.1.4 between any boat racing and the next mark of the course;
 - 7.1.5 between the inner and outer trapezoid courses when boats are racing on both courses;
 - 7.1.6 within 100m of any mark of the course while boats are in the vicinity of that mark; and
 - 7.1.7 within 100m of the finishing line and marks while boats are finishing.
- 7.2 Support boats should proceed around the racing area in such a way to minimise the effect their wash will have on boats racing. Boats that are motoring above five knots shall remain at least 150m from any boat racing.
- 7.3 Between race sequences or when all racing for that Course Area has been postponed or abandoned, support boats may enter the Course Area to service their athletes, but shall restrict their speed to five knots. If further racing is to take place, support boats shall then comply with the applicable STR.



- 7.4 If flag V is displayed on the Race Committee signal boat, the VHF radio permitted in regulation 4.1 shall be switched on and used for safety communication on VHF radio channel 77. Support boats shall follow any directions and these over-ride any conflicting rules in these STR.

8. VENUE

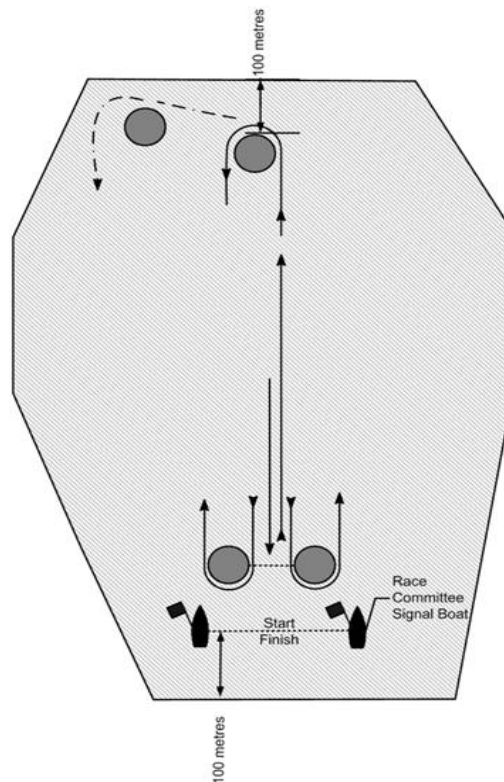
- 8.1 When arriving at the Venue by land, a support boat will be transported by the Organizing Authority to the appropriate storage place unless a Team has a vehicle with VAAP and may enter the venue. No other team vehicle will be allowed inside the venue towing trailers. For launching the support boat, a Team Member shall request the Rio 2016 tractor from the Container and Boat Area Coordinator.
- 8.2 When arriving at the Venue by water, a support boat will follow the instructions of the security team and go the Quarantine pontoon shown in Appendix 3. After passing the security check, the support boat shall be berthed on the allocated pontoon in the water.
- 8.3 Appendix 3 shows the Support Boat pontoons for mooring and the Quarantine Area. Support Boats shall only be berthed on these pontoons.
- 8.4 The Rio 2016 Sailing Competition Area Regulations (CAR) shall apply to all support boats from the 31 August to 17 September 2016.
- 8.5 All support boats shall remain within the competition areas at all times whilst on the water.
- 8.6 Both during the official training period, 31 August to 17 September, as well during the competition period, 11-17 September, only registered athletes' boats, support boats, Race Official boats and accredited personnel (collectively known as Paralympic traffic) are allowed in the Competition Areas. All these boats should leave from the Sailing Venue and go back to the Venue. It is not allowed to enter the Competition Area by launching any competition or support boat from other Venue than the Sailing Venue (Marina da Gloria).
- 8.7 According to the Sailing Equipment Delivery Guidance, a competition boat and support boat may enter the Competition Area to go to the Sailing Venue for the first time to pass through the security check.

APPENDIX 1**Windward – Leeward Course****Trapezoid Course**

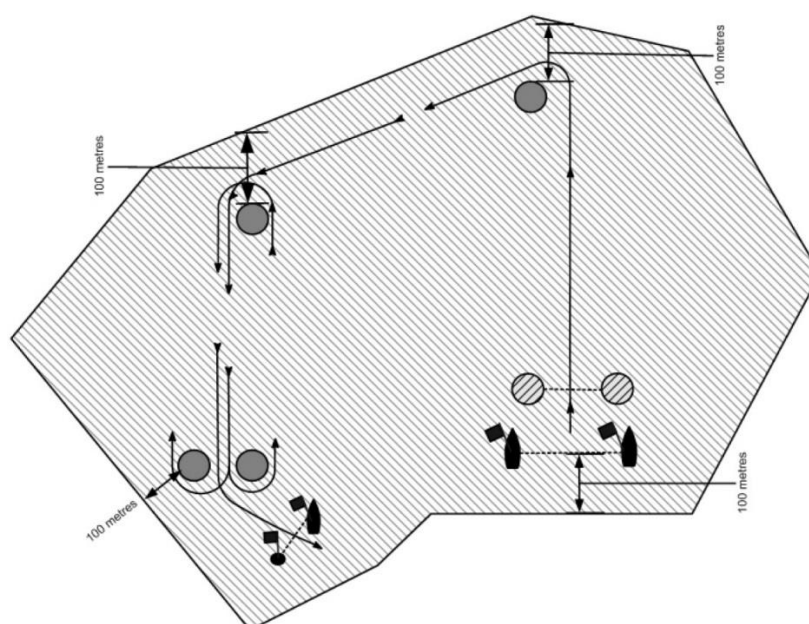
APPENDIX 2

Support Boat Restricted Area

Windward – Leeward Course



Trapezoid Course



APPENDIX 3

Support Boat Mooring Pontoon and Quarantine Area

